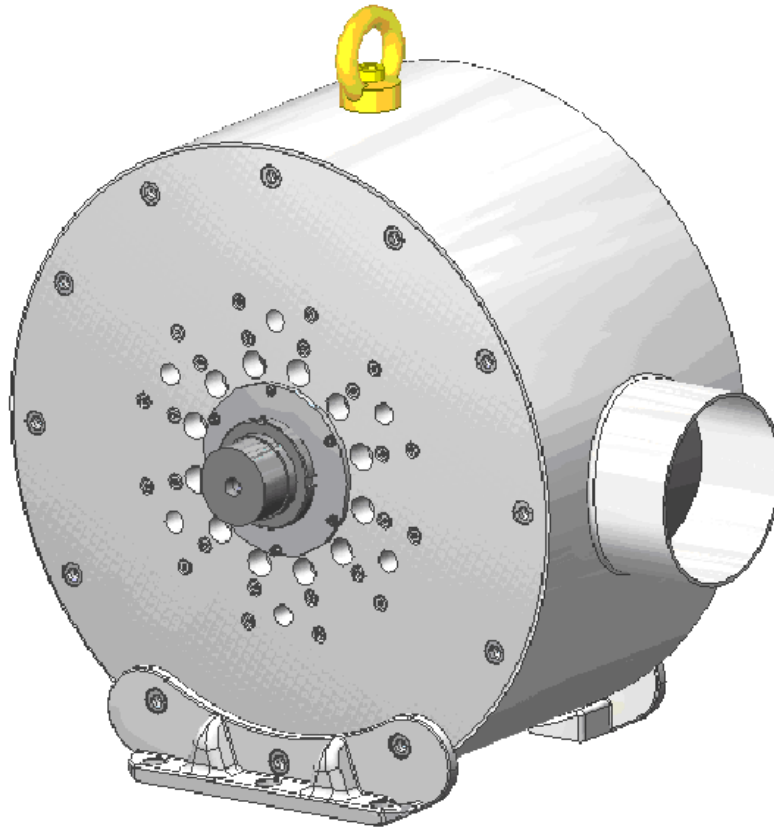


*motor*



*revolution*

**axco motor type 250 B**



**Unique motor for  
variable speed industrial applications**

Integrated for various applications

Extremely compact and light

Environmental friendly

Multiple cooling options available

AXCO-Motors delivers a wide range of adaptable direct-drive motors for numerous gearless industrial applications. AXCO-Motors is committed to provide high-quality customer-focused motors that fully meet your needs and requirements.

The **Axco Motor** type 250 B is especially designed for medium- and high-speed blowers and similar rotating machines covering a power range from 220 to 250 kW and with a maximum speed of 9000 rpm.

## Why to choose Axco Motor type 250 B?

The **Axco Motor** type 250 B is easy to integrate with blowers or similar machines to provide a most compact design.

When a machine is mounted directly on the motor shaft, many components (bearings, gears, shaft coupling etc.) are not required at all.

The type 250 B motor is suitable for use with standard frequency converters.

The motor concept of the type 250 B is environmental friendly. The type 250 B design saves in materials and reduces the motor weight. In most cases, also the variable speed drive saves energy.

Ceramic, grease-lubricated bearings have a two-year service interval.

The motor cooling is tailored to meet every customer's special requirements.

## Technical Data

Parameter	Value
Nominal voltage ( $U_n$ )	400 V
Nominal line current ( $I_n$ )	500 A
Nominal frequency ( $f_n$ )	200 Hz
Nominal speed @ 200 Hz	5883 min <sup>-1</sup>
Nominal torque ( $T_n$ )	400 Nm
Power factor (cos $\varphi$ )	0.75
Electrical efficiency ( $\eta$ )	95 %

Available voltage levels: 400 V / 690 V, other voltages on request.

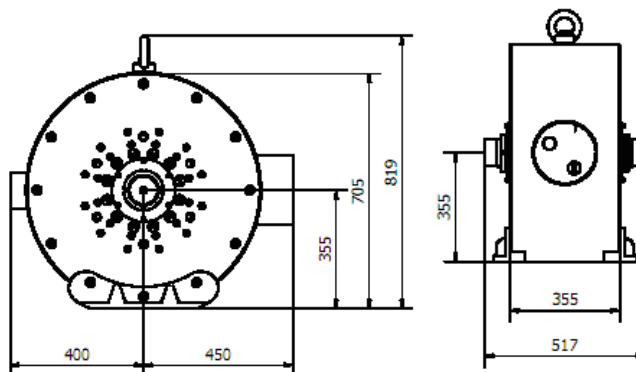
## Supplementary technical information

Protection class	IP 23
Bearings	Grease-lubricated hybrid ball bearings
Cooling	Forced air-ventilation with an external fan Max ambient temperature + 40 °C
Drive	Any standard PWM or DTC drive aimed for induction machines.  Recommended value for the switching frequency: 4 kHz or above.

## Main motor dimensions – Type 250 B

Motor weight: 600 kg

Motor mounting to the motor bed or to the operating unit can be separately agreed upon according to customer's requirements.



## Performance characteristics

Table I. Performance under different load conditions.

$T$ [Nm]	$n$ [min <sup>-1</sup> ]	$U_{ph}$ [V]	$\eta_{el}$ [%]
100	5984	230	89,5
200	5966	230	95,0
250	5956	230	95,5
300	5939	230	95,1
350	5927	230	95,0
400	5883	230	94,6

### AXCO-Motors Oy

Tuotantokatu 2 (Laserkatu 6) | 53850 Lappeenranta FINLAND  
Tel. +358 (0)5 624 3053 | Fax +358 (0)5 624 3054  
[www.axcomotors.com](http://www.axcomotors.com)